

2024 Spring Tools To Bowl 9-Pin

Monday 7:00 pm

Inman's Bowling & Fun Center

Lanes 1 - 28

Secretary/Treasurer: Shaun Ciesielski (219)462-1300 Shaun@inmansbowl.com

View Standings on the Web

Visit LeagueSecretary.com - This league's ID number is 105363

View standings, bowler history, statistics and more. Also check out the Mobile App.



Important Announcements

HOUSE JACKPOT: \$2 House Mystery, \$3 Strike It Ritch, \$5 Stay Clean

=====

SHOP BOWLING EQUIPMENT www.AboveALLBowling.com PROMO CODE: INMANS5

*BOWL-OUTS Call ahead to schedule. Mon,Tues,Thurs 10a-5p or 9p-11p.

Wed+Sat 10a-5p, Sun 12p-5p. Times Subject To Change Based on Business

===== U P C O M I N G T O U R N A M E N T S =====

www.ShaunsTournaments.com & www.Facebook.com/ShausTournaments

ADULTS W I N C A S H & YOUTH W I N S C H O L A R S H I P

-King of the Hill Friday's Weekly Tournament 10:00pm May 24 - Aug. 16

Team Standings

| Place | Lane | # | Team Name | Points Won | Points Lost | %Won | Scratch Pins | Pins + HDCP | Team Avg | High Game | HDCP Game | High Sers | HDCP Sers | Year-To-Date WON | Y-T-D LOST |
|-------|------|----|--------------------|------------|-------------|------|--------------|-------------|----------|-----------|-----------|-----------|-----------|------------------|------------|
| 1 | 3 | 14 | 2 Handers | 26 | 9 | 74.3 | 8781 | 14679 | 590 | 644 | 1042 | 1869 | 3063 | 26 | 9 |
| 2 | 5 | 23 | Brooklyn Bandits | 25 | 10 | 71.4 | 10138 | 15163 | 674 | 800 | 1121 | 2151 | 3147 | 25 | 10 |
| 3 | 7 | 18 | Too Legit to Split | 25 | 10 | 71.4 | 12323 | 14750 | 821 | 924 | 1089 | 2569 | 3064 | 25 | 10 |
| 4 | 27 | 9 | Team 9 | 24 | 11 | 68.6 | 14948 | 15368 | 980 | 1121 | 1136 | 3167 | 3212 | 24 | 11 |
| 5 | 21 | 11 | 2 Plus 2 | 23 | 12 | 65.7 | 9966 | 15135 | 683 | 786 | 1122 | 2308 | 3316 | 23 | 12 |
| 6 | 24 | 5 | Livin' On A Spare | 22 | 13 | 62.9 | 13616 | 14801 | 914 | 1049 | 1123 | 2850 | 3108 | 22 | 13 |
| 7 | 10 | 27 | ESMBOYZ | 17 | 11 | 60.7 | 9079 | 11743 | 755 | 835 | 1045 | 2331 | 2999 | 17 | 11 |
| 8 | 18 | 8 | Team 8 | 21 | 14 | 60.0 | 9004 | 15013 | 603 | 727 | 1115 | 1957 | 3121 | 21 | 14 |
| 9 | 16 | 6 | Pocket Pounders | 19 | 16 | 54.3 | 10458 | 14676 | 695 | 856 | 1143 | 2143 | 2969 | 19 | 16 |
| 10 | 14 | 4 | Team 4 | 19 | 16 | 54.3 | 11316 | 14592 | 753 | 922 | 1136 | 2547 | 3249 | 19 | 16 |
| 11 | 11 | 21 | The Gummy Bears | 19 | 16 | 54.3 | 12099 | 14421 | 805 | 878 | 1036 | 2612 | 3086 | 19 | 16 |
| 12 | 23 | 13 | Violent Collision | 19 | 16 | 54.3 | 9346 | 11638 | 819 | 935 | 1102 | 2582 | 3125 | 19 | 16 |
| 13 | 1 | 12 | Ghost Busters | 18 | 17 | 51.4 | 10285 | 14806 | 689 | 800 | 1100 | 2317 | 3205 | 18 | 17 |
| 14 | 22 | 3 | Bowling Stones | 18 | 17 | 51.4 | 10212 | 14649 | 686 | 764 | 1080 | 2123 | 3071 | 18 | 17 |
| 15 | 15 | 25 | That's How We Roll | 18 | 17 | 51.4 | 9555 | 14385 | 663 | 789 | 1133 | 2145 | 3177 | 18 | 17 |
| 16 | 4 | 22 | Minus One | 17 | 18 | 48.6 | 8427 | 14787 | 562 | 648 | 1078 | 1840 | 3130 | 17 | 18 |
| 17 | 26 | 16 | We Dont Know | 16 | 19 | 45.7 | 12485 | 14699 | 831 | 979 | 1123 | 2664 | 3096 | 16 | 19 |
| 18 | 25 | 7 | Team 7 | 14 | 21 | 40.0 | 8791 | 14896 | 649 | 740 | 1089 | 2083 | 3118 | 14 | 21 |
| 19 | 2 | 20 | The Love Bunnies | 14 | 21 | 40.0 | 10160 | 14825 | 677 | 793 | 1119 | 2153 | 3131 | 14 | 21 |
| 20 | 6 | 15 | Tree Huggers | 14 | 21 | 40.0 | 6716 | 14618 | 453 | 517 | 1054 | 1447 | 3040 | 14 | 21 |
| 21 | 13 | 24 | Fluffy Cats | 14 | 21 | 40.0 | 7107 | 14139 | 473 | 617 | 1071 | 1566 | 2928 | 14 | 21 |
| 22 | 28 | 17 | Glory Bowls | 14 | 21 | 40.0 | 9905 | 14072 | 688 | 821 | 1141 | 2269 | 3229 | 14 | 21 |
| 23 | 9 | 19 | The Pin Ups | 13 | 22 | 37.1 | 8151 | 14391 | 542 | 586 | 1007 | 1732 | 2995 | 13 | 22 |
| 24 | 8 | 26 | Twinkle Toes | 13 | 22 | 37.1 | 9163 | 13978 | 622 | 782 | 1145 | 1979 | 3068 | 13 | 22 |
| 25 | 12 | 1 | Opening Champions | 12 | 23 | 34.3 | 8114 | 14660 | 539 | 670 | 1122 | 1828 | 3184 | 12 | 23 |
| 26 | 17 | 28 | Grabill Family | 9 | 19 | 32.1 | 6238 | 11551 | 517 | 637 | 1079 | 1633 | 2959 | 9 | 19 |
| 27 | 20 | 2 | The Scooby Doobies | 11 | 24 | 31.4 | 10251 | 14595 | 681 | 850 | 1127 | 2127 | 3033 | 11 | 24 |
| 28 | 19 | 10 | Dirty Birds | 7 | 28 | 20.0 | 11698 | 14884 | 806 | 923 | 1113 | 2523 | 3093 | 7 | 28 |

**** Teams appear out of order because standings are determined by percentage of wins to losses, NOT total points**

Review of Last Week's Bowling.....

| Lanes | Team Name | HDCP -1- | HDCP -2- | HDCP -3- | HDCP Total | Last Wk WON | | Team Name | HDCP -1- | HDCP -2- | HDCP -3- | HDCP Total | Last Wk WON |
|-------|--------------------|----------|----------|----------|------------|-------------|-------|--------------------|----------|----------|----------|------------|-------------|
| 1-2 | Minus One | 1004 | 993 | 905 | 2902 | 0 | <---> | Team 9 | 1067 | 1025 | 955 | 3047 | 7 |
| 3-4 | Ghost Busters | 923 | 981 | 800 | 2704 | 2 | <---> | Brooklyn Bandits | 891 | 1026 | 932 | 2849 | 5 |
| 5-6 | 2 Handers | 1040 | 1042 | 981 | 3063 | 7 | <---> | Twinkle Toes | 763 | 780 | 764 | 2307 | 0 |
| 7-8 | ESMBOYZ | 957 | 998 | 937 | 2892 | 5 | <---> | Tree Huggers | 952 | 952 | 952 | 2856 | 2 |
| 9-10 | Opening Champions | 957 | 1105 | 1122 | 3184 | 5 | <---> | Too Legit to Split | 963 | 985 | 964 | 2912 | 2 |
| 11-12 | The Pin Ups | 1006 | 1002 | 919 | 2927 | 5 | <---> | Team 4 | 885 | 917 | 965 | 2767 | 2 |
| 13-14 | The Gummy Bears | 963 | 904 | 805 | 2672 | 2 | <---> | Pocket Pounders | 900 | 905 | 1143 | 2948 | 5 |
| 15-16 | Team 8 | 1115 | 1022 | 984 | 3121 | 7 | <---> | Fluffy Cats | 932 | 876 | 881 | 2689 | 0 |
| 17-18 | That's How We Roll | 991 | 1021 | 1016 | 3028 | 4 | <---> | Dirty Birds | 1053 | 1009 | 1010 | 3072 | 3 |
| 19-20 | 2 Plus 2 | 936 | 1007 | 1027 | 2970 | 5 | <---> | Grabill Family | 996 | 829 | 1026 | 2851 | 2 |
| 21-22 | The Scooby Doobies | 1008 | 898 | 962 | 2868 | 2 | <---> | Violent Collision | 947 | 1081 | 1060 | 3088 | 5 |
| 23-24 | Bowling Stones | 1043 | 955 | 952 | 2950 | 3 | <---> | We Dont Know | 887 | 1093 | 961 | 2941 | 4 |
| 25-26 | Glory Bowls | 820 | 928 | 927 | 2675 | 0 | <---> | Livin' On A Spare | 1032 | 998 | 1021 | 3051 | 7 |
| 27-28 | Team 7 | 993 | 1040 | 1085 | 3118 | 5 | <---> | The Love Bunnies | 990 | 1071 | 961 | 3022 | 2 |

Lane Assignments

| | 1-2 | 3-4 | 5-6 | 7-8 | 9-10 | 11-12 | 13-14 | 15-16 | 17-18 | 19-20 | 21-22 | 23-24 | 25-26 | 27-28 |
|------------|--------|--------|--------|--------|--------|--------|-------|-------|-------|-------|-------|--------|--------|--------|
| Wk06 05/13 | 12- 20 | 14- 22 | 23- 15 | 18- 26 | 19- 27 | 21- 1 | 24- 4 | 25- 6 | 28- 8 | 10- 2 | 11- 3 | 13- 5 | 7- 16 | 9- 17 |
| Wk07 05/20 | 16- 18 | 17- 19 | 21- 20 | 22- 24 | 25- 23 | 28- 26 | 27- 2 | 1- 3 | 5- 4 | 7- 6 | 9- 8 | 12- 10 | 14- 11 | 13- 15 |
| Wk08 05/27 | 19- 13 | 16- 21 | 24- 17 | 25- 20 | 22- 28 | 2- 23 | 26- 3 | 27- 5 | 7- 1 | 9- 4 | 6- 12 | 8- 14 | 15- 10 | 18- 11 |

Individual High Averages

| Men | Women | Boys | Girls |
|------------------------|------------------------|-------------------------|-------------------------|
| 263.75 Kris Lyles | 251.92 Dan Spore | 246.73 Kynan Krause | 246.47 Josephina Clase |
| 260.44 Matt Bobrowski | 225.47 Whitney Wojtkow | 241.75 Gepson Matthes | 185.40 Peyton Noble |
| 251.40 Junior Dalke | 218.83 Leanne Kerley | 224.20 Logan Pitts | 158.67 Goldie Hostetler |
| 250.67 Kyle Ketchum Sr | 172.87 Maggie Gast | 213.13 Bryson Clark | |
| 250.67 Robert Wroblews | 172.00 Tammy Potis | 155.00 Kolton Hostetler | |
| 249.67 Jason McLamb | 171.00 Nichole Spore | | |
| 246.87 Tim Pitts | 164.13 Kaylynn Ketchum | | |
| 243.25 Aaron Fenters | 163.73 Melody Delgado | | |
| 237.47 Joseph Primiani | 157.20 Denise Miller | | |
| 230.08 Robert Kerley | 152.11 Steph Wray | | |

Season High Scores

| Team Scratch Game | Team Scratch Series | Team Handicap Game | Team Handicap Series |
|------------------------|------------------------|------------------------|------------------------|
| 1121 Team 9 | 3167 Team 9 | 1145 Twinkle Toes | 3316 2 Plus 2 |
| 1049 Livin' On A Spare | 2850 Livin' On A Spare | 1143 Pocket Pounders | 3249 Team 4 |
| 979 We Dont Know | 2664 We Dont Know | 1141 Glory Bowls | 3229 Glory Bowls |
| 935 Violent Collision | 2612 The Gummy Bears | 1136 Team 4 | 3212 Team 9 |
| 924 Too Legit to Split | 2582 Violent Collision | 1136 Team 9 | 3205 Ghost Busters |
| Scratch Game | Scratch Series | Handicap Game | Handicap Series |
| 300 Kyle Ketchum Sr | 856 Jason McLamb | 376 Zack Simon | 921 Roger Jackson |
| 300 Timothy Primiani | 836 Kyle Ketchum Sr | 354 Louis Avila | 910 Marcus Tucker |
| 300 Junior Dalke | 835 Kris Lyles | 349 Dustin Oehlman | 899 Aaron Fenters |
| 300 Jason McLamb | 834 Matt Bobrowski | 339 Jerry Wright | 898 Jimi Glacier |
| 300 Nick Kafantoris | 809 Aaron Fenters | 332 Loewen Payne | 896 Zack Simon |
| 300 Matt Bobrowski | | | |
| 300 Robert Wroblewski | | | |
| 300 Tim Pitts | | | |
| 300 Kris Lyles | | | |
| 300 Zack Simon | | | |
| Men | Women | Boys | Girls |
| 300 Dan Spore | 832 Dan Spore | 351 Whitney Wojtkowski | 908 Nichole Spore |
| 298 Whitney Wojtkowski | 733 Whitney Wojtkowski | 332 Nichole Spore | 887 Lupita San Juan |
| 275 Kaylynn Ketchum | 712 Leanne Kerley | 332 Kaylynn Ketchum | 886 Whitney Wojtkowski |
| 256 Leanne Kerley | 641 Nichole Spore | 330 Christine Dalke | 868 Melody Delgado |
| 245 Tammy Potis | 589 Melody Delgado | 324 Lupita San Juan | 849 Christine Dalke |
| 300 Logan Pitts | 874 Kynan Krause | 336 Logan Pitts | 928 Kynan Krause |
| 300 Gepson Matthes | 814 Gepson Matthes | 324 Bryson Clark | 919 Logan Pitts |
| 300 Kynan Krause | 811 Logan Pitts | 319 Gepson Matthes | 907 Gepson Matthes |
| 290 Bryson Clark | 742 Bryson Clark | 318 Kynan Krause | 832 Bryson Clark |
| 221 Kolton Hostetler | 525 Kolton Hostetler | 313 Kolton Hostetler | 789 Kolton Hostetler |

Season High Scores - Continued

| | | | | |
|--------------|---------------------------------|----------------------|-----------------------------------|----------------------|
| Girls | 300 Josephina Clasen | 831 Josephina Clasen | 320 Josephina Clasen | 891 Josephina Clasen |
| | 236 Peyton Noble | 630 Peyton Noble | 306 Goldie Hostetler | 812 Goldie Hostetler |
| | 213 Goldie Hostetler | 539 Goldie Hostetler | 287 Peyton Noble | 783 Peyton Noble |
| | Season Game Over Average | | Season Series over Average | |
| | Game - Avg=Difference | | Series - Avg=Difference | |
| Men | 300 - 170=130 | Zack Simon | 747 - 564=183 | Roger Jackson |
| | 266 - 157=109 | Louis Avila | 613 - 435=178 | Marcus Tucker |
| | 254 - 149=105 | Dustin Oehlman | 582 - 423=159 | Rick Stewart |
| | 233 - 138=95 | Jerry Wright | 668 - 510=158 | Zack Simon |
| | 267 - 181=86 | Loewen Payne | 778 - 621=157 | Jimi Glacier |
| Women | 298 - 194=104 | Whitney Wojtkowski | 641 - 468=173 | Nichole Spore |
| | 243 - 156=87 | Nichole Spore | 482 - 321=161 | Lupita San Juan |
| | 216 - 129=87 | Christine Dalke | 727 - 582=145 | Whitney Wojtkowski |
| | 275 - 190=85 | Kaylynn Ketchum | 589 - 456=133 | Melody Delgado |
| | 189 - 107=82 | Lupita San Juan | 507 - 387=120 | Christine Dalke |
| Boys | 300 - 212=88 | Logan Pitts | 874 - 693=181 | Kynan Krause |
| | 290 - 214=76 | Bryson Clark | 811 - 636=175 | Logan Pitts |
| | 288 - 217=71 | Gepson Matthes | 814 - 651=163 | Gepson Matthes |
| | 300 - 231=69 | Kynan Krause | 742 - 654=88 | Bryson Clark |
| | 221 - 153=68 | Kolton Hostetler | 525 - 471=54 | Kolton Hostetler |
| Girls | 300 - 228=72 | Josephina Clasen | 831 - 684=147 | Josephina Clasen |
| | 205 - 143=62 | Goldie Hostetler | 509 - 429=80 | Goldie Hostetler |
| | 236 - 196=40 | Peyton Noble | 630 - 588=42 | Peyton Noble |

Most Improved Average

| | | | |
|--------------|--|---------------------------------------|---------------------------------------|
| Men | 137 to 137.93 = +0.93 Michael Househo | 208 to 208.93 = +0.93 Nathan Faldzins | 246 to 246.87 = +0.87 Tim Pitts |
| | 167 to 167.80 = +0.80 Dan Ormos | 180 to 180.80 = +0.80 Zack Simon | 132 to 132.80 = +0.80 Kris Scifres |
| Women | 138 to 138.93 = +0.93 Christine Dalke | 133 to 133.93 = +0.93 Margaret Alexan | 172 to 172.87 = +0.87 Maggie Gast |
| | 142 to 142.80 = +0.80 Andrea Frank | 163 to 163.73 = +0.73 Melody Delgado | 124 to 124.73 = +0.73 Lupita San Juan |
| Boys | 246 to 246.73 = +0.73 Kynan Krause | 224 to 224.20 = +0.20 Logan Pitts | 213 to 213.13 = +0.13 Bryson Clark |
| | 155 to 155.00 = 0.00 Kolton Hostetler | to 241.75 = Gepson Matthes | |
| Girls | 158 to 158.67 = +0.67 Goldie Hostetler | 246 to 246.47 = +0.47 Josephina Clase | 185 to 185.40 = +0.40 Peyton Noble |

Last Week's Top Scores

| | <u>Team Scratch Game</u> | <u>Team Scratch Series</u> | <u>Team Handicap Game</u> | <u>Team Handicap Series</u> |
|--------------|--------------------------|----------------------------|---------------------------|-----------------------------|
| | 1037 Team 9 | 2957 Team 9 | 1143 Pocket Pounders | 3184 Opening Champion |
| | 941 Livin' On A Spare | 2778 Livin' On A Spare | 1122 Opening Champions | 3121 Team 8 |
| | 937 We Dont Know | 2473 We Dont Know | 1115 Team 8 | 3118 Team 7 |
| | 867 Violent Collision | 2472 Dirty Birds | 1093 We Dont Know | 3088 Violent Collision |
| | 856 Pocket Pounders | 2446 Violent Collision | 1085 Team 7 | 3072 Dirty Birds |
| | <u>Scratch Game</u> | <u>Scratch Series</u> | <u>Handicap Game</u> | <u>Handicap Series</u> |
| Men | 300 Michael Davis | 836 Kyle Ketchum Sr | 339 Jerry Wright | 890 Roger Jackson |
| | 300 Robert Wroblewski | 797 Aaron Fenters | 325 Roger Jackson | 867 Jerry Wright |
| | 300 Tim Pitts | 787 Tim Pitts | 310 Aaron Fenters | 854 Kyle Ketchum Sr |
| | 296 Aaron Fenters | 781 Robert Wroblewski | 310 Kyle Ketchum Jr | 839 Aaron Fenters |
| | 290 Kyle Ketchum Sr | 773 Roger Jackson | 306 Tim Pitts | 835 Louis Avila |
| | 290 Junior Dalke | | | |
| Women | 276 Dan Spore | 789 Dan Spore | 332 Nichole Spore | 908 Nichole Spore |
| | 266 Whitney Wojtkowski | 733 Whitney Wojtkowski | 319 Maggie Gast | 825 Andrea Frank |
| | 243 Nichole Spore | 643 Leanne Kerley | 318 Andrea Frank | 824 Peggy Lustgarten |
| | 242 Maggie Gast | 641 Nichole Spore | 306 Margaret Alexander | 818 Danielle Simon |
| | 234 Leanne Kerley | 571 Maggie Gast | 301 Christine Dalke | 817 Whitney Wojtkowski |
| Boys | 300 Logan Pitts | 811 Logan Pitts | 336 Logan Pitts | 919 Logan Pitts |
| | 300 Gepson Matthes | 785 Gepson Matthes | 314 Gepson Matthes | 827 Gepson Matthes |
| | 258 Kynan Krause | 654 Bryson Clark | 313 Kolton Hostetler | 765 Bryson Clark |
| | 234 Bryson Clark | 650 Kynan Krause | 271 Bryson Clark | 758 Kolton Hostetler |
| | 221 Kolton Hostetler | 482 Kolton Hostetler | 258 Kynan Krause | 650 Kynan Krause |

Last Week's Top Scores - Continued

| | | | | |
|--------------|---------------------------------|----------------------|-----------------------------------|----------------------|
| Girls | 298 Josephina Clasen | 678 Josephina Clasen | 298 Josephina Clasen | 678 Josephina Clasen |
| | 186 Peyton Noble | 468 Peyton Noble | 246 Goldie Hostetler | 659 Goldie Hostetler |
| | 164 Goldie Hostetler | 413 Goldie Hostetler | 241 Peyton Noble | 633 Peyton Noble |
| | Weekly Game Over Average | | Weekly Series over Average | |
| | Game - Avg=Difference | | Series - Avg=Difference | |
| Men | 233 - 138=95 | Jerry Wright | 773 - 624=149 | Roger Jackson |
| | 286 - 208=78 | Roger Jackson | 549 - 414=135 | Jerry Wright |
| | 277 - 215=62 | Kyle Ketchum Jr | 836 - 729=107 | Kyle Ketchum Sr |
| | 296 - 235=61 | Aaron Fenters | 628 - 531=97 | Louis Avila |
| | 219 - 160=59 | Rick Stewart | 797 - 705=92 | Aaron Fenters |
| Women | 243 - 156=87 | Nichole Spore | 641 - 468=173 | Nichole Spore |
| | 210 - 136=74 | Andrea Frank | 458 - 363=95 | Peggy Lustgarten |
| | 242 - 168=74 | Maggie Gast | 501 - 408=93 | Andrea Frank |
| | 195 - 133=62 | Margaret Alexander | 470 - 381=89 | Danielle Simon |
| | 196 - 139=57 | Christine Dalke | 733 - 660=73 | Whitney Wojtkowski |
| Boys | 300 - 212=88 | Logan Pitts | 811 - 636=175 | Logan Pitts |
| | 221 - 153=68 | Kolton Hostetler | 785 - 705=80 | Gepson Matthes |
| | 300 - 235=65 | Gepson Matthes | 482 - 459=23 | Kolton Hostetler |
| | 234 - 211=23 | Bryson Clark | 654 - 633=21 | Bryson Clark |
| | 258 - 254=4 | Kynan Krause | 650 - 762=-112 | Kynan Krause |
| Girls | 298 - 251=47 | Josephina Clasen | 678 - 753=-75 | Josephina Clasen |
| | 164 - 163=1 | Goldie Hostetler | 413 - 489=-76 | Goldie Hostetler |
| | 186 - 192=-6 | Peyton Noble | 468 - 576=-108 | Peyton Noble |

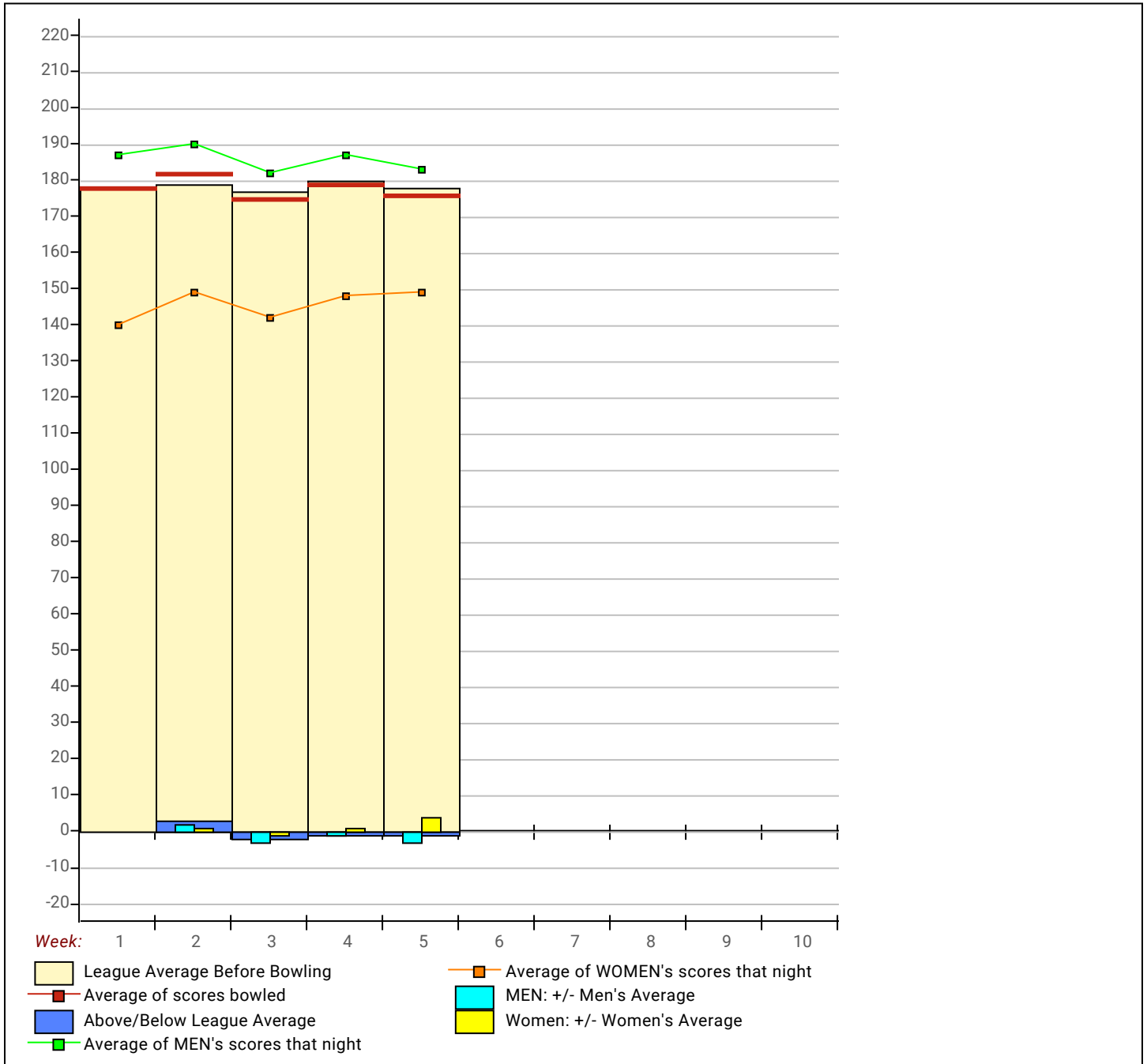
Team Rosters

| Name | True | | | | | | | HDCP High | | | | | | | To Raise | | To Drop | | Most Improved | | | |
|-------------------------------|--------------------------|------|------|-----|------|------|------|-----------|-------|------|------|------|------|------|----------|------|---------|--------|---------------|-------|-----|-----|
| | Average | HDCP | Pins | Gms | -1- | -2- | -3- | Total | Total | Game | HDCP | High | HDCP | High | Sers | Sers | Avg +1 | Avg -1 | 200's | 600's | Avg | +/- |
| 1 - Opening Champions | Lane 12 HDCP=436 Avg=539 | | | | | | | | | | | | | | | | | | | | | |
| Andrea Frank | 142.80 | 102 | 2142 | 15 | 127 | 164 | 210 | 501 | 825 | 210 | 318 | 501 | 825 | 432 | 413 | 1 | -- | 142 | +0.80 | | | |
| Loretta Frank | 106.47 | 136 | 1597 | 15 | 109 | 110 | 123 | 342 | 756 | 155 | 287 | 342 | 756 | 329 | 310 | -- | -- | 106 | +0.47 | | | |
| Jake Simon | 158.40 | 87 | 2376 | 15 | 124 | 200 | 191 | 515 | 785 | 223 | 311 | 515 | 785 | 486 | 467 | 2 | -- | 158 | +0.40 | | | |
| Danielle Simon | 133.27 | 111 | 1999 | 15 | 145 | 179 | 146 | 470 | 818 | 187 | 303 | 470 | 818 | 413 | 394 | -- | -- | 133 | +0.27 | | | |
| 2 - The Scooby Doobies | Lane 20 HDCP=302 Avg=681 | | | | | | | | | | | | | | | | | | | | | |
| Zander Oehlman | 176.80 | 70 | 2652 | 15 | 195 | 141 | 147 | 483 | 681 | 229 | 305 | 596 | 824 | 534 | 515 | 3 | -- | 176 | +0.80 | | | |
| Bob Lawton | 175.53 | 71 | 2633 | 15 | 187 | 155 | 209 | 551 | 770 | 209 | 282 | 569 | 782 | 535 | 516 | 2 | -- | 175 | +0.53 | | | |
| Dustin Oehlman | 159.33 | 86 | 2390 | 15 | 147 | 147 | 163 | 457 | 709 | 254 | 349 | 586 | 871 | 490 | 471 | 1 | -- | 159 | +0.33 | | | |
| Zac Lawton | 171.73 | 75 | 2576 | 15 | 183 | 159 | 147 | 489 | 708 | 241 | 294 | 583 | 746 | 520 | 501 | 2 | -- | 171 | +0.73 | | | |
| 3 - Bowling Stones | Lane 22 HDCP=297 Avg=686 | | | | | | | | | | | | | | | | | | | | | |
| Maggie Gast | 172.87 | 74 | 2593 | 15 | 242 | 170 | 159 | 571 | 802 | 242 | 319 | 571 | 819 | 521 | 502 | 2 | -- | 172 | +0.87 | | | |
| Rich Gast | 158.33 | 87 | 2375 | 15 | 165 | 149 | 157 | 471 | 732 | 230 | 320 | 511 | 776 | 487 | 468 | 2 | -- | 158 | +0.33 | | | |
| Steph Wray | 152.11 | 93 | 1369 | 9 | a142 | a142 | a142 | 426 | 705 | 190 | 291 | 486 | 777 | 467 | 454 | -- | -- | | | | | |
| Scott Wray | 204.67 | 43 | 2456 | 12 | a194 | a194 | a194 | 582 | 711 | 263 | 305 | 677 | 803 | 619 | 603 | 5 | 2 | | | | | |
| 4 - Team 4 | Lane 14 HDCP=232 Avg=753 | | | | | | | | | | | | | | | | | | | | | |
| Tom Johnson | 207.27 | 40 | 3109 | 15 | 178 | 232 | 169 | 579 | 693 | 280 | 314 | 746 | 848 | 635 | 616 | 6 | 2 | 207 | +0.27 | | | |
| Rick Stewart | 164.00 | 81 | 2460 | 15 | 174 | 147 | 219 | 540 | 795 | 219 | 315 | 582 | 891 | 510 | 491 | 3 | -- | 164 | 0.00 | | | |
| Mike Simons | 183.80 | 63 | 2757 | 15 | 138 | 165 | 171 | 474 | 645 | 245 | 308 | 617 | 806 | 555 | 536 | 5 | 1 | 183 | +0.80 | | | |
| Brian Babcock | 199.33 | 48 | 2990 | 15 | 174 | 152 | 185 | 511 | 634 | 268 | 298 | 680 | 791 | 610 | 591 | 7 | 2 | 199 | +0.33 | | | |
| 5 - Livin' On A Spare | Lane 24 HDCP=80 Avg=914 | | | | | | | | | | | | | | | | | | | | | |
| Bryson Clark | 213.13 | 35 | 3197 | 15 | 234 | 201 | 219 | 654 | 765 | 290 | 324 | 742 | 832 | 655 | 636 | 10 | 4 | 213 | +0.13 | | | |
| Jordyn Severson | 231.67 | 18 | 1390 | 6 | a221 | a221 | a221 | 663 | 717 | 277 | 298 | 708 | 771 | 698 | 688 | 6 | 2 | | | | | |
| Kynan Krause | 246.73 | 3 | 3701 | 15 | 207 | 185 | 258 | 650 | 650 | 300 | 318 | 874 | 928 | 745 | 726 | 14 | 5 | 246 | +0.73 | | | |
| Logan Pitts | 224.20 | 24 | 3363 | 15 | 279 | 300 | 232 | 811 | 919 | 300 | 336 | 811 | 919 | 687 | 668 | 10 | 3 | 224 | +0.20 | | | |
| 6 - Pocket Pounders | Lane 16 HDCP=288 Avg=695 | | | | | | | | | | | | | | | | | | | | | |
| David Rossa | 177.13 | 69 | 2657 | 15 | 162 | 128 | 217 | 507 | 708 | 222 | 287 | 543 | 747 | 547 | 528 | 3 | -- | 177 | +0.13 | | | |
| Michael Householder A | 137.93 | 107 | 2069 | 15 | 115 | 115 | 175 | 405 | 723 | 175 | 281 | 437 | 734 | 415 | 396 | -- | -- | 137 | +0.93 | | | |
| Michael Householder W | 173.20 | 73 | 2598 | 15 | 157 | 165 | 228 | 550 | 778 | 228 | 304 | 550 | 778 | 534 | 515 | 5 | -- | 173 | +0.20 | | | |
| Nathan Faldzinski | 208.93 | 39 | 3134 | 15 | 179 | 210 | 236 | 625 | 739 | 265 | 308 | 665 | 794 | 628 | 609 | 8 | 4 | 208 | +0.93 | | | |

| Name | True | | | HDCP High HDCP High HDCP To Raise To Drop | | | | | | | | | | | | | | Most Improved | |
|--|---------|------|----------|---|------|------|-------|-------|------|------|------|------|--------|--------|-------|-------|-----|---------------|-------|
| | Average | HDCP | Pins Gms | -1- | -2- | -3- | Total | Total | Game | Game | Sers | Sers | Avg +1 | Avg -1 | 200's | 600's | Avg | +/- | |
| 7 - Team 7 Lane 25 HDCP=334 Avg=649 | | | | | | | | | | | | | | | | | | | |
| Nichole Spore | 171.00 | 75 | 2052 | 12 | 155 | 243 | 243 | 641 | 908 | 243 | 332 | 641 | 908 | 528 | 512 | 2 | 1 | | |
| Dan Spore | 251.92 | 0 | 3023 | 12 | 276 | 248 | 265 | 789 | 792 | 300 | 300 | 832 | 832 | 757 | 741 | 11 | 4 | | |
| Glenda Ketterman | 110.47 | 133 | 1657 | 15 | 135 | 97 | 127 | 359 | 761 | 135 | 269 | 359 | 761 | 341 | 322 | -- | -- | 110 | +0.47 |
| Sara Ehlers | 117.27 | 126 | 1759 | 15 | 82 | 107 | 105 | 294 | 657 | 167 | 294 | 407 | 791 | 365 | 346 | -- | -- | 117 | +0.27 |
| 8 - Team 8 Lane 18 HDCP=374 Avg=603 | | | | | | | | | | | | | | | | | | | |
| Peggy Lustgarten | 127.53 | 116 | 1913 | 15 | 162 | 136 | 160 | 458 | 824 | 162 | 284 | 458 | 824 | 391 | 372 | -- | -- | 127 | +0.53 |
| Jerry Wright | 149.33 | 95 | 1792 | 12 | 233 | 163 | 153 | 549 | 867 | 233 | 339 | 549 | 867 | 458 | 442 | 1 | -- | | |
| Melissa Tobias | 118.13 | 125 | 1772 | 15 | 96 | 121 | 88 | 305 | 668 | 167 | 274 | 412 | 733 | 370 | 351 | -- | -- | 118 | +0.13 |
| Russ Tobias | 209.53 | 38 | 3143 | 15 | 236 | 214 | 195 | 645 | 762 | 253 | 297 | 662 | 791 | 637 | 618 | 7 | 5 | 209 | +0.53 |
| 9 - Team 9 Lane 27 HDCP=30 Avg=980 | | | | | | | | | | | | | | | | | | | |
| Mike Plance | 221.25 | 27 | 2655 | 12 | 210 | 176 | 238 | 624 | 693 | 255 | 274 | 705 | 786 | 675 | 659 | 10 | 4 | | |
| Kris Lyles | 263.75 | 0 | 3165 | 12 | | | | 0 | 0 | 300 | 300 | 835 | 835 | 795 | 779 | 12 | 4 | | |
| Tim Pitts | 246.87 | 3 | 3703 | 15 | 265 | 300 | 222 | 787 | 805 | 300 | 315 | 787 | 805 | 743 | 724 | 15 | 5 | 246 | +0.87 |
| Robert Wroblewski | 250.67 | 0 | 3760 | 15 | 262 | 219 | 300 | 781 | 784 | 300 | 301 | 789 | 789 | 758 | 739 | 14 | 5 | 250 | +0.67 |
| Ted Rosenquist | 300.00 | 0 | 900 | 3 | | | | 0 | 0 | 300 | 300 | 900 | 900 | 906 | 899 | 3 | 1 | | |
| Michael Davis | 255.00 | 0 | 765 | 3 | 300 | 300 | 165 | 765 | 765 | 300 | 300 | 765 | 765 | 771 | 764 | 2 | 1 | | |
| 10 - Dirty Birds Lane 19 HDCP=192 Avg=806 | | | | | | | | | | | | | | | | | | | |
| Mikey McCray | 125.17 | 118 | 1502 | 12 | 146 | 140 | 111 | 397 | 760 | 146 | 267 | 397 | 760 | 388 | 372 | -- | -- | | |
| Josh Hines | 193.50 | 54 | 2322 | 12 | 207 | 187 | 230 | 624 | 798 | 255 | 312 | 691 | 862 | 588 | 572 | 7 | 2 | | |
| Nick Kafantoris | 228.47 | 20 | 3427 | 15 | 250 | 232 | 219 | 701 | 764 | 300 | 318 | 717 | 792 | 695 | 676 | 13 | 5 | 228 | +0.47 |
| Matt Bobrowski | 260.44 | 0 | 2344 | 9 | a250 | a250 | a250 | 750 | 750 | 300 | 300 | 834 | 834 | 788 | 775 | 9 | 3 | | |
| Nate Diller | 89.00 | 152 | 267 | 3 | | | | 0 | 0 | 136 | 288 | 267 | 723 | 273 | 266 | -- | -- | | |
| 11 - 2 Plus 2 Lane 21 HDCP=299 Avg=683 | | | | | | | | | | | | | | | | | | | |
| Joan Dunn | 133.40 | 111 | 2001 | 15 | 88 | 125 | 121 | 334 | 652 | 175 | 287 | 478 | 814 | 411 | 392 | -- | -- | 133 | +0.40 |
| James Delgado | 167.47 | 78 | 2512 | 15 | 152 | 136 | 170 | 458 | 683 | 217 | 297 | 567 | 807 | 512 | 493 | 2 | -- | 167 | +0.47 |
| Melody Delgado | 163.73 | 82 | 2456 | 15 | 151 | 158 | 190 | 499 | 745 | 212 | 305 | 589 | 868 | 496 | 477 | 1 | -- | 163 | +0.73 |
| Roger Jackson | 220.67 | 28 | 2648 | 12 | 243 | 286 | 244 | 773 | 890 | 286 | 325 | 773 | 921 | 667 | 651 | 8 | 3 | | |
| Ed Dunn | 116.33 | 127 | 349 | 3 | | | | 0 | 0 | 138 | 265 | 349 | 730 | 353 | 346 | -- | -- | | |
| 12 - Ghost Busters Lane 1 HDCP=293 Avg=689 | | | | | | | | | | | | | | | | | | | |
| Peyton Noble | 185.40 | 61 | 2781 | 15 | 186 | 128 | 154 | 468 | 633 | 236 | 287 | 630 | 783 | 567 | 548 | 6 | 2 | 185 | +0.40 |
| Goldie Hostetler | 158.67 | 87 | 2380 | 15 | 121 | 164 | 128 | 413 | 659 | 213 | 306 | 539 | 812 | 482 | 463 | 2 | -- | 158 | +0.67 |
| Josephina Clasen | 246.47 | 3 | 3697 | 15 | 245 | 298 | 135 | 678 | 678 | 300 | 320 | 831 | 891 | 749 | 730 | 14 | 5 | 246 | +0.47 |
| Summer Petersen | 100.17 | 142 | 1202 | 12 | 91 | 111 | 103 | 305 | 734 | 165 | 321 | 360 | 828 | 313 | 297 | -- | -- | | |
| 13 - Violent Collision Lane 23 HDCP=170 Avg=819 | | | | | | | | | | | | | | | | | | | |
| Gary Gear | 197.33 | 50 | 1184 | 6 | | | | 0 | 0 | 212 | 261 | 594 | 741 | 598 | 588 | 2 | -- | | |
| Joshua Baker | 189.67 | 57 | 2276 | 12 | 152 | 215 | 243 | 610 | 793 | 255 | 329 | 616 | 838 | 574 | 558 | 5 | 2 | | |
| Steve Whitaker | 190.33 | 57 | 1713 | 9 | 207 | 200 | 149 | 556 | 721 | 223 | 283 | 599 | 779 | 579 | 566 | 6 | -- | | |
| Aaron Fenters | 243.25 | 6 | 2919 | 12 | 239 | 296 | 262 | 797 | 839 | 296 | 318 | 809 | 899 | 741 | 725 | 10 | 4 | | |
| Eric Wiseman | 217.00 | 31 | 651 | 3 | | | | 0 | 0 | 250 | 281 | 651 | 744 | 657 | 650 | 2 | 1 | | |
| Robbie Jones | 161.00 | 84 | 483 | 3 | 135 | 156 | 192 | 483 | 735 | 192 | 276 | 483 | 735 | 489 | 482 | -- | -- | | |
| 14 - 2 Handers Lane 3 HDCP=388 Avg=590 | | | | | | | | | | | | | | | | | | | |
| Austin Petersen | 144.50 | 100 | 1734 | 12 | 137 | 119 | 196 | 452 | 758 | 196 | 298 | 510 | 758 | 441 | 425 | -- | -- | | |
| VACANT | | 190 | 0 | 0 | v50 | v50 | v50 | 150 | 720 | 0 | | 0 | | | | -- | -- | | |
| Gepson Matthes | 241.75 | 8 | 2901 | 12 | 300 | 254 | 231 | 785 | 827 | 300 | 319 | 814 | 907 | 729 | 713 | 11 | 4 | | |
| Kolton Hostetler | 155.00 | 90 | 2325 | 15 | 155 | 221 | 106 | 482 | 758 | 221 | 313 | 525 | 789 | 483 | 464 | 2 | -- | 155 | 0.00 |
| 15 - Tree Huggers Lane 6 HDCP=519 Avg=453 | | | | | | | | | | | | | | | | | | | |
| VACANT | | 190 | 0 | 0 | v50 | v50 | v50 | 150 | 720 | 0 | | 0 | | | | -- | -- | | |
| VACANT | | 190 | 0 | 0 | v50 | v50 | v50 | 150 | 720 | 0 | | 0 | | | | -- | -- | | |
| John Cegar | 133.22 | 111 | 1199 | 9 | a123 | a123 | a123 | 369 | 702 | 177 | 297 | 458 | 818 | 409 | 396 | -- | -- | | |
| Jimi Glacier | 220.75 | 28 | 2649 | 12 | a210 | a210 | a210 | 630 | 714 | 267 | 304 | 778 | 898 | 666 | 650 | 7 | 3 | | |
| 16 - We Dont Know Lane 26 HDCP=159 Avg=831 | | | | | | | | | | | | | | | | | | | |
| Kyle Ketchum Jr | 215.00 | 33 | 3225 | 15 | 174 | 277 | 188 | 639 | 738 | 277 | 310 | 711 | 828 | 663 | 644 | 8 | 4 | 215 | 0.00 |
| Kyle Ketchum Sr | 250.67 | 0 | 3760 | 15 | 266 | 290 | 280 | 836 | 854 | 300 | 300 | 836 | 854 | 758 | 739 | 13 | 4 | 250 | +0.67 |
| Kaylynn Ketchum | 164.13 | 81 | 2462 | 15 | 134 | 175 | 147 | 456 | 690 | 275 | 332 | 571 | 750 | 508 | 489 | 2 | -- | 164 | +0.13 |
| Derrick Calmbacher | 202.53 | 45 | 3038 | 15 | 157 | 195 | 190 | 542 | 659 | 265 | 303 | 697 | 841 | 616 | 597 | 8 | 3 | 202 | +0.53 |
| 17 - Glory Bowls Lane 28 HDCP=294 Avg=688 | | | | | | | | | | | | | | | | | | | |
| Dan Ormos | 167.80 | 78 | 2517 | 15 | 139 | 189 | 217 | 545 | 788 | 217 | 303 | 545 | 849 | 507 | 488 | 2 | -- | 167 | +0.80 |
| Jeramie Conners | 159.73 | 86 | 2396 | 15 | 140 | 141 | 125 | 406 | 646 | 241 | 312 | 574 | 787 | 484 | 465 | 2 | -- | 159 | +0.73 |
| Nathan Doran | 158.50 | 87 | 951 | 6 | | | | 0 | 0 | 186 | 268 | 489 | 735 | 480 | 470 | -- | -- | | |
| Loewen Payne | 204.67 | 43 | 3070 | 15 | 167 | 180 | 212 | 559 | 673 | 267 | 332 | 700 | 858 | 620 | 601 | 8 | 3 | 204 | +0.67 |
| Mike Johns | 141.83 | 103 | 851 | 6 | 99 | 143 | 98 | 340 | 568 | 219 | 295 | 511 | 739 | 427 | 417 | 1 | -- | | |

| Name | True | | | -1- | -2- | -3- | Total | HDCP | | | | | To Raise | To Drop | Most Improved | | | | |
|---|---------|------|----------|-----|------|------|-------|-------|-----------|-----------|-----------|-----------|----------|---------|---------------|--------|-------|-------|-------|
| | Average | HDCP | Pins Gms | | | | | Total | High Game | HDCP Game | High Sers | HDCP Sers | | | Avg +1 | Avg -1 | 200's | 600's | Avg |
| 18 - Too Legit to Split Lane 7 HDCP=169 Avg=821 | | | | | | | | | | | | | | | | | | | |
| Zack Simon | 180.80 | 66 | 2712 | 15 | 184 | 163 | 167 | 514 | 703 | 300 | 376 | 668 | 896 | 546 | 527 | 2 | 1 | 180 | +0.80 |
| Jeff McNabb | 193.60 | 54 | 2904 | 15 | 237 | 198 | 168 | 603 | 771 | 254 | 293 | 630 | 771 | 588 | 569 | 5 | 3 | 193 | +0.60 |
| Leanne Kerley | 218.83 | 30 | 2626 | 12 | 185 | 224 | 234 | 643 | 727 | 256 | 293 | 712 | 823 | 659 | 643 | 10 | 4 | | |
| Robert Kerley | 230.08 | 19 | 2761 | 12 | 194 | 237 | 232 | 663 | 711 | 298 | 315 | 721 | 772 | 704 | 688 | 9 | 4 | | |
| 19 - The Pin Ups Lane 9 HDCP=434 Avg=542 | | | | | | | | | | | | | | | | | | | |
| Kris Scifres | 132.80 | 112 | 1992 | 15 | 147 | 186 | 110 | 443 | 785 | 193 | 311 | 449 | 785 | 402 | 383 | -- | -- | 132 | +0.80 |
| VACANT | | 190 | 0 | 0 | v50 | v50 | v50 | 150 | 720 | 0 | | 0 | | | | -- | -- | | |
| Scott Miller | 203.40 | 44 | 3051 | 15 | 221 | 191 | 181 | 593 | 722 | 265 | 301 | 740 | 839 | 621 | 602 | 7 | 3 | 203 | +0.40 |
| Denise Miller | 157.20 | 88 | 2358 | 15 | 155 | 142 | 145 | 442 | 700 | 223 | 306 | 508 | 763 | 486 | 467 | 1 | -- | 157 | +0.20 |
| 20 - The Love Bunnies Lane 2 HDCP=304 Avg=677 | | | | | | | | | | | | | | | | | | | |
| Alex Lippelt | 186.73 | 60 | 2801 | 15 | 188 | 223 | 205 | 616 | 808 | 230 | 302 | 616 | 831 | 565 | 546 | 5 | 2 | 186 | +0.73 |
| Lupita San Juan | 124.73 | 119 | 1871 | 15 | 134 | 173 | 111 | 418 | 784 | 189 | 324 | 482 | 887 | 379 | 360 | -- | -- | 124 | +0.73 |
| Isabel Farmer | 146.20 | 98 | 2193 | 15 | 147 | 154 | 124 | 425 | 716 | 195 | 300 | 514 | 829 | 453 | 434 | -- | -- | 146 | +0.20 |
| Chase Farmer | 221.83 | 27 | 2662 | 12 | a211 | a211 | a211 | 633 | 714 | 278 | 283 | 740 | 758 | 668 | 652 | 9 | 3 | | |
| 21 - The Gummy Bears Lane 11 HDCP=184 Avg=805 | | | | | | | | | | | | | | | | | | | |
| Timothy Primiani | 221.73 | 27 | 3326 | 15 | 253 | 180 | 184 | 617 | 686 | 300 | 305 | 732 | 747 | 670 | 651 | 10 | 4 | 221 | +0.73 |
| Joseph Primiani | 237.47 | 12 | 3562 | 15 | 218 | 230 | 195 | 643 | 661 | 287 | 299 | 772 | 875 | 722 | 703 | 13 | 5 | 237 | +0.47 |
| Lucas Doran | 170.00 | 76 | 2550 | 15 | 126 | 224 | 175 | 525 | 756 | 241 | 301 | 590 | 784 | 528 | 509 | 3 | -- | 170 | 0.00 |
| Christan VeCasey | 177.40 | 69 | 2661 | 15 | 202 | 106 | 87 | 395 | 569 | 233 | 290 | 605 | 773 | 543 | 524 | 5 | 1 | 177 | +0.40 |
| 22 - Minus One Lane 4 HDCP=414 Avg=562 | | | | | | | | | | | | | | | | | | | |
| Amanda McLamb | 116.25 | 127 | 1395 | 12 | 130 | 108 | 98 | 336 | 714 | 161 | 283 | 401 | 767 | 360 | 344 | -- | -- | | |
| VACANT | | 190 | 0 | 0 | v50 | v50 | v50 | 150 | 720 | 0 | | 0 | | | | -- | -- | | |
| Devon McLamb | 147.73 | 97 | 2216 | 15 | 167 | 153 | 161 | 481 | 781 | 213 | 322 | 513 | 840 | 448 | 429 | 1 | -- | 147 | +0.73 |
| Jason McLamb | 249.67 | 0 | 3745 | 15 | 241 | 266 | 180 | 687 | 687 | 300 | 305 | 856 | 871 | 755 | 736 | 14 | 5 | 249 | +0.67 |
| 23 - Brooklyn Bandits Lane 5 HDCP=309 Avg=674 | | | | | | | | | | | | | | | | | | | |
| Christine Dalke | 138.93 | 106 | 2084 | 15 | 114 | 196 | 105 | 415 | 730 | 216 | 330 | 507 | 849 | 418 | 399 | 1 | -- | 138 | +0.93 |
| Nate Vas | 105.13 | 137 | 1577 | 15 | 107 | 104 | 94 | 305 | 713 | 151 | 293 | 368 | 794 | 331 | 312 | -- | -- | 105 | +0.13 |
| Matt Dalke | 180.40 | 66 | 2706 | 15 | 160 | 161 | 142 | 463 | 643 | 221 | 281 | 579 | 780 | 552 | 533 | 3 | -- | 180 | +0.40 |
| Junior Dalke | 251.40 | 0 | 3771 | 15 | 209 | 264 | 290 | 763 | 763 | 300 | 318 | 804 | 855 | 765 | 746 | 14 | 5 | 251 | +0.40 |
| 24 - Fluffy Cats Lane 13 HDCP=500 Avg=473 | | | | | | | | | | | | | | | | | | | |
| Tammy Potis | 172.00 | 74 | 2580 | 15 | 157 | 147 | 167 | 471 | 684 | 245 | 320 | 570 | 822 | 534 | 515 | 3 | -- | 172 | 0.00 |
| VACANT | | 190 | 0 | 0 | v50 | v50 | v50 | 150 | 720 | 0 | | 0 | | | | -- | -- | | |
| Jenna Potis | 96.67 | 146 | 1450 | 15 | 85 | 63 | 47 | 195 | 609 | 152 | 274 | 365 | 731 | 296 | 277 | -- | -- | 96 | +0.67 |
| Sam Potis | 155.13 | 90 | 2327 | 15 | 155 | 131 | 132 | 418 | 676 | 261 | 310 | 594 | 741 | 481 | 462 | 2 | -- | 155 | +0.13 |
| 25 - That's How We Roll Lane 15 HDCP=318 Avg=663 | | | | | | | | | | | | | | | | | | | |
| Jessica Tucker | 128.07 | 115 | 1921 | 15 | 118 | 125 | 120 | 363 | 705 | 153 | 274 | 454 | 817 | 401 | 382 | -- | -- | 128 | +0.07 |
| Marcus Tucker | 176.27 | 70 | 2644 | 15 | 160 | 206 | 218 | 584 | 809 | 218 | 310 | 613 | 910 | 542 | 523 | 5 | 1 | 176 | +0.27 |
| Louis Avila | 184.07 | 62 | 2761 | 15 | 202 | 222 | 204 | 628 | 835 | 266 | 354 | 628 | 847 | 569 | 550 | 6 | 1 | 184 | +0.07 |
| Dennis Mitchell | 175.75 | 71 | 2109 | 12 | 187 | 144 | 150 | 481 | 679 | 216 | 264 | 627 | 746 | 531 | 515 | 3 | 1 | | |
| 26 - Twinkle Toes Lane 8 HDCP=357 Avg=622 | | | | | | | | | | | | | | | | | | | |
| Randall Alexander Jr | 196.47 | 51 | 2947 | 15 | 216 | 182 | 197 | 595 | 748 | 224 | 267 | 613 | 773 | 599 | 580 | 6 | 2 | 196 | +0.47 |
| Margaret Alexander | 133.93 | 111 | 2009 | 15 | 91 | 195 | 123 | 409 | 742 | 195 | 306 | 446 | 742 | 403 | 384 | -- | -- | 133 | +0.93 |
| Randall Alexander III | 68.75 | 172 | 825 | 12 | | | | 0 | 0 | 103 | 271 | 256 | 769 | 210 | 194 | -- | -- | | |
| Whitney Wojtkowski | 225.47 | 23 | 3382 | 15 | 266 | 213 | 254 | 733 | 817 | 298 | 351 | 733 | 886 | 686 | 667 | 12 | 4 | 225 | +0.47 |
| 27 - ESMBOYZ Lane 10 HDCP=230 Avg=755 | | | | | | | | | | | | | | | | | | | |
| Jacob Grainger | 177.67 | 69 | 1066 | 6 | 147 | 144 | 210 | 501 | 675 | 223 | 281 | 565 | 739 | 536 | 526 | 2 | -- | | |
| Cole Smith | 189.50 | 57 | 1137 | 6 | | | | 0 | 0 | 250 | 318 | 601 | 805 | 573 | 563 | 3 | 1 | | |
| Andrew Robbins | 180.92 | 66 | 2171 | 12 | 200 | 179 | 166 | 545 | 743 | 235 | 309 | 594 | 816 | 544 | 528 | 2 | -- | | |
| Brian Hardsock | 209.25 | 38 | 2511 | 12 | 184 | 247 | 168 | 599 | 707 | 253 | 307 | 719 | 881 | 639 | 623 | 6 | 2 | | |
| Tyler Hardsock | 182.83 | 64 | 2194 | 12 | 200 | 202 | 167 | 569 | 767 | 245 | 284 | 625 | 767 | 551 | 535 | 4 | 1 | | |
| 28 - Grabill Family Lane 17 HDCP=457 Avg=517 | | | | | | | | | | | | | | | | | | | |
| Jared Grabill | 202.58 | 45 | 2431 | 12 | 220 | 152 | 219 | 591 | 720 | 277 | 311 | 651 | 753 | 614 | 598 | 7 | 2 | | |
| Jessica Grabill | 116.83 | 127 | 1402 | 12 | 104 | 92 | 158 | 354 | 735 | 186 | 297 | 400 | 735 | 353 | 337 | -- | -- | | |
| Camden Grabill | 82.92 | 159 | 995 | 12 | 73 | 68 | 80 | 221 | 686 | 124 | 290 | 283 | 781 | 250 | 234 | -- | -- | | |
| Chase Grabill | 117.50 | 126 | 1410 | 12 | 150 | 68 | 120 | 338 | 710 | 157 | 287 | 389 | 779 | 360 | 344 | -- | -- | | |

League Average Week-by-Week



Important Messages

HOUSE MYSTERY POT: \$2.00 to Enter, Covers Games 1 & 2 ONLY
 Circle The Number Next To Your Name and Drop Your \$2 In The Bucket

Alphabetical List of All Members of This League

| Lane | | | | True | | | | Lane | | | | True | | | |
|-------|------|---------------------------|---------|------|-----|------|-------|------|------|------------------------|--------|------|--------|--|--|
| NxtWk | Team | Name | Average | Pins | Gms | HDCP | NxtWk | Team | Name | Average | Pins | Gms | HDCP | | |
| 1 | 0 | , Butters | | 0 | 0 | 0 | 59 | 16 | 6 | Faldzinski, Nathan | 208.93 | 3134 | 15 39 | | |
| 2 | 0 | ???, Kerry | | 0 | 0 | 0 | 60 | 2 | 20 | Farmer, Chase | 221.83 | 2662 | 12 27 | | |
| 3 | 8 | 26 Alexander, Margaret | 133.93 | 2009 | 15 | 111 | 61 | 2 | 20 | Farmer, Isabel | 146.20 | 2193 | 15 98 | | |
| 4 | 8 | 26 Alexander III, Randall | 68.75 | 825 | 12 | 172 | 62 | 23 | 13 | Fenters, Aaron | 243.25 | 2919 | 12 6 | | |
| 5 | 8 | 26 Alexander Jr, Randall | 196.47 | 2947 | 15 | 51 | 63 | 12 | 1 | Frank, Andrea | 142.80 | 2142 | 15 102 | | |
| 6 | 15 | 25 Avila, Louis | 184.07 | 2761 | 15 | 62 | 64 | 12 | 1 | Frank, Loretta | 106.47 | 1597 | 15 136 | | |
| 7 | 14 | 4 Babcock, Brian | 199.33 | 2990 | 15 | 48 | 65 | 22 | 3 | Gast, Maggie | 172.87 | 2593 | 15 74 | | |
| 8 | 23 | 13 Baker, Joshua | 189.67 | 2276 | 12 | 57 | 66 | 22 | 3 | Gast, Rich | 158.33 | 2375 | 15 87 | | |
| 9 | 0 | Balazs, Pam | | 0 | 0 | 0 | 67 | 23 | 13 | Gear, Gary | 197.33 | 1184 | 6 50 | | |
| 10 | 0 | Balcerak, Tom | | 0 | 0 | 0 | 68 | 0 | 0 | Girouard, Jadelynn | | 0 | 0 0 | | |
| 11 | 0 | Barnes, Alzora | | 0 | 0 | 0 | 69 | 6 | 15 | Glacier, Jimi | 220.75 | 2649 | 12 28 | | |
| 12 | 0 | Bartos, Baylei | | 0 | 0 | 0 | 70 | 0 | 0 | Gniadecki, Abigail | | 0 | 0 0 | | |
| 13 | 0 | Bartos, Mason | | 0 | 0 | 0 | 71 | 17 | 28 | Grabill, Camden | 82.92 | 995 | 12 159 | | |
| 14 | 19 | 10 Bobrowski, Matt | 260.44 | 2344 | 9 | 0 | 72 | 17 | 28 | Grabill, Chase | 117.50 | 1410 | 12 126 | | |
| 15 | 0 | Bohm, Isaac | | 0 | 0 | 0 | 73 | 17 | 28 | Grabill, Jared | 202.58 | 2431 | 12 45 | | |
| 16 | 0 | Bohm, Maggie | | 0 | 0 | 0 | 74 | 17 | 28 | Grabill, Jessica | 116.83 | 1402 | 12 127 | | |
| 17 | 0 | Bohm, Nick | | 0 | 0 | 0 | 75 | 10 | 27 | Grainger, Jacob | 177.67 | 1066 | 6 69 | | |
| 18 | 0 | Bryant, Jeremy | | 0 | 0 | 0 | 76 | 0 | 0 | Gutierrez, Jeremy | | 0 | 0 0 | | |
| 19 | 0 | Bryant, Katrina | | 0 | 0 | 0 | 77 | 10 | 27 | Hardsock, Brian | 209.25 | 2511 | 12 38 | | |
| 20 | 0 | Buczko, Eddie | | 0 | 0 | 0 | 78 | 10 | 27 | Hardsock, Tyler | 182.83 | 2194 | 12 64 | | |
| 21 | 0 | Calhoun, Jake | | 0 | 0 | 0 | 79 | 0 | 0 | Hardwick, Ben | | 0 | 0 0 | | |
| 22 | 26 | 16 Calmbacher, Derrick | 202.53 | 3038 | 15 | 45 | 80 | 0 | 0 | Hillers, Tim | | 0 | 0 0 | | |
| 23 | 0 | Carr, Sawyer | | 0 | 0 | 0 | 81 | 19 | 10 | Hines, Josh | 193.50 | 2322 | 12 54 | | |
| 24 | 0 | Carr, Scott | | 0 | 0 | 0 | 82 | 1 | 12 | Hostetler, Goldie | 158.67 | 2380 | 15 87 | | |
| 25 | 6 | 15 Cegar, John | 133.22 | 1199 | 9 | 111 | 83 | 3 | 14 | Hostetler, Kolton | 155.00 | 2325 | 15 90 | | |
| 26 | 0 | Ciavirelli, Jon | | 0 | 0 | 0 | 84 | 16 | 6 | Householder A, Michael | 137.93 | 2069 | 15 107 | | |
| 27 | 0 | Ciavirelli, Jonny | | 0 | 0 | 0 | 85 | 16 | 6 | Householder W, Michael | 173.20 | 2598 | 15 73 | | |
| 28 | 0 | Ciavirelli, Lily | | 0 | 0 | 0 | 86 | 0 | 0 | Howell, Nicholas | | 0 | 0 0 | | |
| 29 | 0 | Ciesielski, Bree | | 0 | 0 | 0 | 87 | 0 | 0 | Hutnick, Heather | | 0 | 0 0 | | |
| 30 | 0 | Ciesielski, Bella | | 0 | 0 | 0 | 88 | 0 | 0 | Hutnick, Mark | | 0 | 0 0 | | |
| 31 | 0 | Clark, Ashley | | 0 | 0 | 0 | 89 | 21 | 11 | Jackson, Roger | 220.67 | 2648 | 12 28 | | |
| 32 | 24 | 5 Clark, Bryson | 213.13 | 3197 | 15 | 35 | 90 | 28 | 17 | Johns, Mike | 141.83 | 851 | 6 103 | | |
| 33 | 0 | Clark, John | | 0 | 0 | 0 | 91 | 0 | 0 | Johnson, Andrew | | 0 | 0 0 | | |
| 34 | 1 | 12 Clasen, Josephina | 246.47 | 3697 | 15 | 3 | 92 | 0 | 0 | Johnson, Ann | | 0 | 0 0 | | |
| 35 | 28 | 17 Conners, Jeramie | 159.73 | 2396 | 15 | 86 | 93 | 0 | 0 | Johnson, Scott | | 0 | 0 0 | | |
| 36 | 0 | Cuellar, Devanne | | 0 | 0 | 0 | 94 | 14 | 4 | Johnson, Tom | 207.27 | 3109 | 15 40 | | |
| 37 | 0 | Curry, Hank | | 0 | 0 | 0 | 95 | 23 | 13 | Jones, Robbie | 161.00 | 483 | 3 84 | | |
| 38 | 0 | Curry, Sam | | 0 | 0 | 0 | 96 | 19 | 10 | Kafantoris, Nick | 228.47 | 3427 | 15 20 | | |
| 39 | 5 | 23 Dalke, Christine | 138.93 | 2084 | 15 | 106 | 97 | 0 | 0 | Kaiser, Quintin | | 0 | 0 0 | | |
| 40 | 5 | 23 Dalke, Junior | 251.40 | 3771 | 15 | 0 | 98 | 7 | 18 | Kerley, Leanne | 218.83 | 2626 | 12 30 | | |
| 41 | 5 | 23 Dalke, Matt | 180.40 | 2706 | 15 | 66 | 99 | 0 | 0 | Kerley, Rebecca | | 0 | 0 0 | | |
| 42 | 0 | Davis, Michael | | 0 | 0 | 0 | 100 | 7 | 18 | Kerley, Robert | 230.08 | 2761 | 12 19 | | |
| 43 | 0 | Davis, Michael | | 0 | 0 | 0 | 101 | 26 | 16 | Ketchum, Kaylynn | 164.13 | 2462 | 15 81 | | |
| 44 | 27 | 9 Davis, Michael | 255.00 | 765 | 3 | 0 | 102 | 26 | 16 | Ketchum Jr, Kyle | 215.00 | 3225 | 15 33 | | |
| 45 | 21 | 11 Delgado, James | 167.47 | 2512 | 15 | 78 | 103 | 26 | 16 | Ketchum Sr, Kyle | 250.67 | 3760 | 15 0 | | |
| 46 | 21 | 11 Delgado, Melody | 163.73 | 2456 | 15 | 82 | 104 | 25 | 7 | Ketterman, Glenda | 110.47 | 1657 | 15 133 | | |
| 47 | 0 | DiAnni, Joe | | 0 | 0 | 0 | 105 | 24 | 5 | Krause, Kynan | 246.73 | 3701 | 15 3 | | |
| 48 | 19 | 10 Diller, Nate | 89.00 | 267 | 3 | 152 | 106 | 0 | 0 | Krupa, Al | | 0 | 0 0 | | |
| 49 | 0 | Dominiak, David | | 0 | 0 | 0 | 107 | 0 | 0 | Kwiatkoski, Sherry | | 0 | 0 0 | | |
| 50 | 0 | Dominiak, Victor | | 0 | 0 | 0 | 108 | 20 | 2 | Lawton, Bob | 175.53 | 2633 | 15 71 | | |
| 51 | 0 | Doolittle, Leif | | 0 | 0 | 0 | 109 | 20 | 2 | Lawton, Zac | 171.73 | 2576 | 15 75 | | |
| 52 | 11 | 21 Doran, Lucas | 170.00 | 2550 | 15 | 76 | 110 | 2 | 20 | Lippelt, Alex | 186.73 | 2801 | 15 60 | | |
| 53 | 28 | 17 Doran, Nathan | 158.50 | 951 | 6 | 87 | 111 | 0 | 0 | Lockwood, J'Shaun | | 0 | 0 0 | | |
| 54 | 0 | Downey, Haadynn | | 0 | 0 | 0 | 112 | 18 | 8 | Lustgarten, Peggy | 127.53 | 1913 | 15 116 | | |
| 55 | 21 | 11 Dunn, Ed | 116.33 | 349 | 3 | 127 | 113 | 27 | 9 | Lyles, Kris | 263.75 | 3165 | 12 0 | | |
| 56 | 21 | 11 Dunn, Joan | 133.40 | 2001 | 15 | 111 | 114 | 3 | 14 | Matthes, Gepson | 241.75 | 2901 | 12 8 | | |
| 57 | 0 | Dwyer, Kat | | 0 | 0 | 0 | 115 | 19 | 10 | McCray, Mikey | 125.17 | 1502 | 12 118 | | |
| 58 | 25 | 7 Ehlers, Sara | 117.27 | 1759 | 15 | 126 | 116 | 4 | 22 | McLamb, Amanda | 116.25 | 1395 | 12 127 | | |

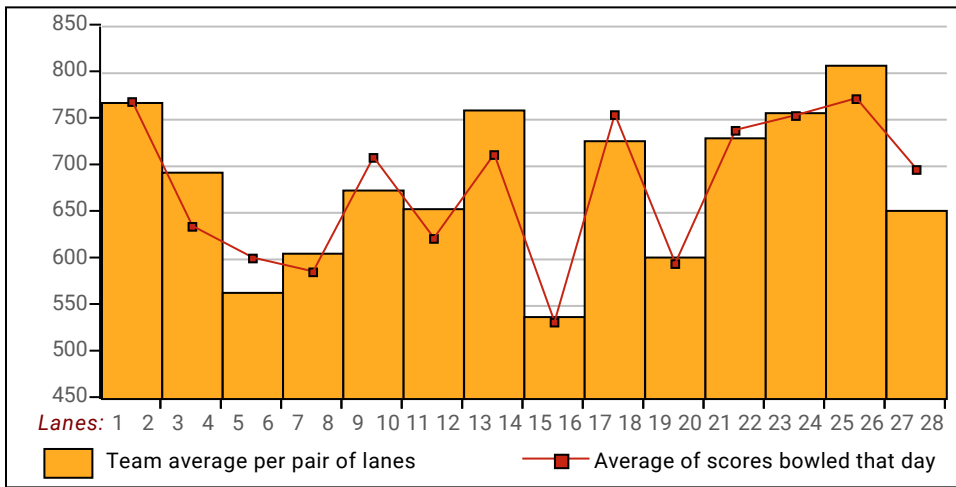
| Lane | | | True | | | | Lane | | | True | | | |
|-------|------|-------------------------|---------|------|-----|------|-------|------|------------------------|---------|------|-----|------|
| NxtWk | Team | Name | Average | Pins | Gms | HDCP | NxtWk | Team | Name | Average | Pins | Gms | HDCP |
| 117 | 0 | McLamb, Bryce | | 0 | 0 | 0 | 158 | 0 | Schafbuctt, Colin | | 0 | 0 | 0 |
| 118 | 4 | 22 McLamb, Devon | 147.73 | 2216 | 15 | 97 | 159 | 0 | Schafbuctt, Jack | | 0 | 0 | 0 |
| 119 | 4 | 22 McLamb, Jason | 249.67 | 3745 | 15 | 0 | 160 | 9 | 19 Scifres, Kris | 132.80 | 1992 | 15 | 112 |
| 120 | 7 | 18 McNabb, Jeff | 193.60 | 2904 | 15 | 54 | 161 | 24 | 5 Severson, Jordyn | 231.67 | 1390 | 6 | 18 |
| 121 | 0 | McWhirter, Kim | | 0 | 0 | 0 | 162 | 0 | Severson, Tracy | | 0 | 0 | 0 |
| 122 | 0 | Mears, Jenny | | 0 | 0 | 0 | 163 | 12 | 1 Simon, Danielle | 133.27 | 1999 | 15 | 111 |
| 123 | 0 | Mears, Lauryn | | 0 | 0 | 0 | 164 | 12 | 1 Simon, Jake | 158.40 | 2376 | 15 | 87 |
| 124 | 9 | 19 Miller, Denise | 157.20 | 2358 | 15 | 88 | 165 | 7 | 18 Simon, Zack | 180.80 | 2712 | 15 | 66 |
| 125 | 9 | 19 Miller, Scott | 203.40 | 3051 | 15 | 44 | 166 | 14 | 4 Simons, Mike | 183.80 | 2757 | 15 | 63 |
| 126 | 15 | 25 Mitchell, Dennis | 175.75 | 2109 | 12 | 71 | 167 | 10 | 27 Smith, Cole | 189.50 | 1137 | 6 | 57 |
| 127 | 0 | Mocaby-Ankarlo, Jada K. | | 0 | 0 | 0 | 168 | 25 | 7 Spore, Dan | 251.92 | 3023 | 12 | 0 |
| 128 | 0 | Murray, Zak | | 0 | 0 | 0 | 169 | 25 | 7 Spore, Nichole | 171.00 | 2052 | 12 | 75 |
| 129 | 0 | Myers, Michael | | 0 | 0 | 0 | 170 | 14 | 4 Stewart, Rick | 164.00 | 2460 | 15 | 81 |
| 130 | 0 | Myers, Sarah | | 0 | 0 | 0 | 171 | 0 | Taing, Alyssa | | 0 | 0 | 0 |
| 131 | 0 | Nicholas III, Jerry | | 0 | 0 | 0 | 172 | 0 | Thielen, Chris | | 0 | 0 | 0 |
| 132 | 0 | Noble, Adam | | 0 | 0 | 0 | 173 | 0 | Thielen, Joseph | | 0 | 0 | 0 |
| 133 | 1 | 12 Noble, Peyton | 185.40 | 2781 | 15 | 61 | 174 | 0 | Thielen, Zach | | 0 | 0 | 0 |
| 134 | 20 | 2 Oehlman, Dustin | 159.33 | 2390 | 15 | 86 | 175 | 18 | 8 Tobias, Melissa | 118.13 | 1772 | 15 | 125 |
| 135 | 20 | 2 Oehlman, Zander | 176.80 | 2652 | 15 | 70 | 176 | 18 | 8 Tobias, Russ | 209.53 | 3143 | 15 | 38 |
| 136 | 28 | 17 Ormos, Dan | 167.80 | 2517 | 15 | 78 | 177 | 0 | Tomczak, Matt | | 0 | 0 | 0 |
| 137 | 28 | 17 Payne, Loewen | 204.67 | 3070 | 15 | 43 | 178 | 15 | 25 Tucker, Jessica | 128.07 | 1921 | 15 | 115 |
| 138 | 3 | 14 Petersen, Austin | 144.50 | 1734 | 12 | 100 | 179 | 15 | 25 Tucker, Marcus | 176.27 | 2644 | 15 | 70 |
| 139 | 0 | Petersen, Jimmy | | 0 | 0 | 0 | 180 | 0 | Vanderhayden, Billy | | 0 | 0 | 0 |
| 140 | 1 | 12 Petersen, Summer | 100.17 | 1202 | 12 | 142 | 181 | 0 | Vanderhayden, Hayley | | 0 | 0 | 0 |
| 141 | 0 | Petersen, Tiffany | | 0 | 0 | 0 | 182 | 0 | Vanderploeg, Colton | | 0 | 0 | 0 |
| 142 | 24 | 5 Pitts, Logan | 224.20 | 3363 | 15 | 24 | 183 | 0 | Vanderploeg, Donald | | 0 | 0 | 0 |
| 143 | 27 | 9 Pitts, Tim | 246.87 | 3703 | 15 | 3 | 184 | 0 | Vanderploeg, Easton | | 0 | 0 | 0 |
| 144 | 27 | 9 Plance, Mike | 221.25 | 2655 | 12 | 27 | 185 | 5 | 23 Vas, Nate | 105.13 | 1577 | 15 | 137 |
| 145 | 13 | 24 Potis, Jenna | 96.67 | 1450 | 15 | 146 | 186 | 11 | 21 VeCasey, Christan | 177.40 | 2661 | 15 | 69 |
| 146 | 13 | 24 Potis, Sam | 155.13 | 2327 | 15 | 90 | 187 | 0 | Volcsko, Nattalie | | 0 | 0 | 0 |
| 147 | 13 | 24 Potis, Tammy | 172.00 | 2580 | 15 | 74 | 188 | 0 | Watkins, Olivia | | 0 | 0 | 0 |
| 148 | 11 | 21 Primiani, Joseph | 237.47 | 3562 | 15 | 12 | 189 | 0 | Watkins, Robert | | 0 | 0 | 0 |
| 149 | 11 | 21 Primiani, Timothy | 221.73 | 3326 | 15 | 27 | 190 | 23 | 13 Whitaker, Steve | 190.33 | 1713 | 9 | 57 |
| 150 | 0 | Pugh, Chris | | 0 | 0 | 0 | 191 | 0 | Whitten, Casey | | 0 | 0 | 0 |
| 151 | 10 | 27 Robbins, Andrew | 180.92 | 2171 | 12 | 66 | 192 | 23 | 13 Wiseman, Eric | 217.00 | 651 | 3 | 31 |
| 152 | 0 | Rodich, Michael | | 0 | 0 | 0 | 193 | 8 | 26 Wojtkowski, Whitney | 225.47 | 3382 | 15 | 23 |
| 153 | 0 | Rosenquist, Korinn | | 0 | 0 | 0 | 194 | 0 | Worden, Andrew | | 0 | 0 | 0 |
| 154 | 27 | 9 Rosenquist, Ted | 300.00 | 900 | 3 | 0 | 195 | 22 | 3 Wray, Scott | 204.67 | 2456 | 12 | 43 |
| 155 | 16 | 6 Rossa, David | 177.13 | 2657 | 15 | 69 | 196 | 22 | 3 Wray, Steph | 152.11 | 1369 | 9 | 93 |
| 156 | 2 | 20 San Juan, Lupita | 124.73 | 1871 | 15 | 119 | 197 | 18 | 8 Wright, Jerry | 149.33 | 1792 | 12 | 95 |
| 157 | 0 | Schafbuctt, Bryan | | 0 | 0 | 0 | 198 | 27 | 9 Wroblewski, Robert | 250.67 | 3760 | 15 | 0 |

Men & Women, Left & Right Handed Statistics

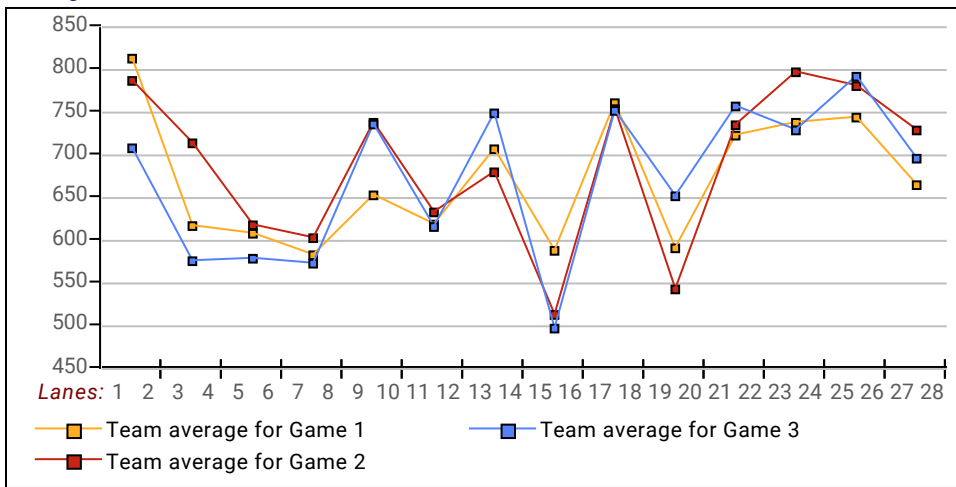
Unless designated left handed, bowlers are considered right handed.

| | Over All | M-Rt | M-Left | W-Rt | W-Left |
|--|-----------------|-------------|---------------|-------------|---------------|
| How many people bowled | 98 | 65 | 0 | 25 | 0 |
| Number of games bowled | 294 | 195 | 0 | 75 | 0 |
| Actual average of week's scores | 176.45 | 183.29 | 0.00 | 149.25 | 0.00 |
| How many games above average | 137 | 91 | 0 | 34 | 0 |
| How many games below average | 155 | 104 | 0 | 39 | 0 |
| Pins above/below average per game | -0.61 | -2.25 | 0.00 | 4.41 | 0.00 |
| How many people raised average by this amount | 46 3.94 | 28 3.77 | -- 0.00 | 14 3.94 | -- 0.00 |
| How many people went down by this amount | 50 -4.34 | 35 -4.57 | -- 0.00 | 11 -2.92 | -- 0.00 |
| League average before bowling | 177.51 | 185.97 | 0.00 | 145.27 | 0.00 |
| League average after bowling | 177.14 | 185.13 | 0.00 | 146.19 | 0.00 |
| Change in league average | -0.36 | -0.84 | 0.00 | 0.92 | 0.00 |
| 800s | 2 | 1 | -- | -- | -- |
| 775s | 5 | 3 | -- | 1 | -- |
| 750s | 3 | 3 | -- | -- | -- |
| 725s | 1 | -- | -- | 1 | -- |
| 700s | 1 | 1 | -- | -- | -- |
| 675s | 2 | 1 | -- | -- | -- |
| 650s | 3 | 1 | -- | -- | -- |
| 625s | 7 | 5 | -- | 2 | -- |
| 600s | 6 | 6 | -- | -- | -- |
| 575s | 6 | 6 | -- | -- | -- |
| 550s | 6 | 5 | -- | 1 | -- |
| 525s | 6 | 6 | -- | -- | -- |
| 500s | 6 | 5 | -- | 1 | -- |
| 475s | 7 | 5 | -- | 1 | -- |
| 450s | 11 | 6 | -- | 4 | -- |
| 425s | 3 | 1 | -- | 2 | -- |
| 400s | 7 | 3 | -- | 3 | -- |
| below 400 | 16 | 7 | -- | 9 | -- |
| 300s | 6 | 4 | -- | -- | -- |
| 275s | 9 | 6 | -- | 1 | -- |
| 250s | 13 | 8 | -- | 3 | -- |
| 225s | 27 | 18 | -- | 5 | -- |
| 200s | 42 | 35 | -- | 3 | -- |
| 175s | 43 | 35 | -- | 6 | -- |
| 150s | 57 | 40 | -- | 14 | -- |
| 125s | 47 | 29 | -- | 15 | -- |
| 100s | 30 | 11 | -- | 17 | -- |
| below 100 | 20 | 9 | -- | 11 | -- |

Team Average vs Avg of Scores



Average of Scores for Each Game



Amount Over/Under Team Average

