

Tuesday 6:30 pm

## Sunset Lanes

Lanes 1 - 12

### Team Standings

Place	Lane	#	Team Name	Points Won	Points Lost	%Won	Team Avg	Scratch Pins	High Game	High Sers
1	3	1	BALLS TO THE WALLS	245½	138 ½	63.9	663	47478	822	2141
2	5	4	LUX CLUB	224½	159 ½	58.5	677	47696	781	2181
3	4	9	SUNSET LANES	221	163	57.6	681	48694	844	2294
4	7	5	FAMILY BEER	215	169	56.0	662	48251	813	2217
5	6	10	FOODIE GARAGE	207	177	53.9	651	47739	793	2167
6	8	6	LIFELINE	196	188	51.0	673	47706	816	2206
7	10	7	MAX SMITH CONCRETE CONST	195½	188 ½	50.9	628	47158	790	2182
8	9	12	SUNSET BAR	190	194	49.5	645	46467	804	2145
9	11	11	EAGLE POINT SOFTWARE	185½	198 ½	48.3	644	46393	772	2212
10	12	3	SULLY'S PRO SHOP	156	228	40.6	627	45503	767	2121
11	1	2	SANDY HOOK	147	237	38.3	622	44953	753	2033
12	2	8	ROUND TWO	121	263	31.5	634	44846	745	2046

### Review of Last Week's Bowling.....

Lanes	Team Name	-1-	-2-	-3-	Total	Last Wk WON	Team Name	-1-	-2-	-3-	Total	Last Wk WON
1-2	SANDY HOOK	658	584	753	1995	10	<---> ROUND TWO	649	591	697	1937	6
3-4	BALLS TO THE WALL	716	741	655	2112	8	<---> SUNSET LANES	733	650	710	2093	8
5-6	LUX CLUB	721	765	685	2171	14	<---> FOODIE GARAGE	684	627	669	1980	2
7-8	FAMILY BEER	745	715	757	2217	13½	<---> LIFELINE	591	659	663	1913	2½
9-10	SUNSET BAR	572	587	554	1713	4	<---> MAX SMITH CONCRE	661	552	691	1904	12
11-12	EAGLE POINT SOFTW	717	615	613	1945	6	<---> SULLY'S PRO SHOP	690	627	739	2056	10

### Lane Assignments

	1-2	3-4	5-6	7-8	9-10	11-12
Wk24 03/19	2- 8	1- 9	4- 10	5- 6	12- 7	11- 3

*Manually assigned*

### Last Week's Top Scores

Scratch Game	765	LUX CLUB	757	FAMILY BEER	753	SANDY HOOK
Scratch Series	2217	FAMILY BEER	2171	LUX CLUB	2112	BALLS TO THE WALLS
Scratch Game	300	Jonathan Schroeder	300	Zachary Althaus	300	Dan Moore
Scratch Series	799	Zachary Althaus	779	Andrew Willems	767	Steve Breitbach

### Season High Scores

Scratch Game	844	SUNSET LANES	822	BALLS TO THE WALLS	816	LIFELINE
Scratch Series	2294	SUNSET LANES	2217	FAMILY BEER	2212	EAGLE POINT SOFTWARE

*Bowlers must have completed a minimum of 48 games to be eligible for any league award.*

Scratch Game	300	Jonathan Schroeder	300	Terry Cottrell	300	Andy Ehrlich
	300	Mark London	300	Zachary Althaus	300	John Biver
	300	Andrew Gantenbein	300	Ken Duffield	300	Don Grant
	300	Dan Moore	300	Kody Klein	300	Shawn Timmerman
Scratch Series	846	Kody Klein	823	Jonathan Schroeder	819	Shawn Timmerman

### Individual High Averages

237.90	Bob Hochrein	236.63	Shawn Timmerman	232.83	Andy Ehrlich
230.73	Kody Klein	230.52	Terry Cottrell	228.39	Steve Breitbach

### High Individual Match Points

45	Terry Cottrell	44	Shawn Timmerman	41.5	Mark London
41.5	Jerome Lang	39	Stephanie Beck	39	Cindy Cottrell

**Team Rosters**

**1 - BALLS TO THE WALLS**

Name	Points Won	Points Lost	%Won	Pins	Gms	Avg	High Game	High Sers	-1-	-2-	-3-	Total
Mark D. London	41.5	30.5	57.64 %	15950	72	221	300	794	256	237	238	731
Paul R. Gregory	38.5	21.5	64.17 %	13439	60	223	299	757	246	257	167	670
Jerome Lang	41.5	24.5	62.88 %	14474	66	219	279	742	214	247	250	711

**2 - SANDY HOOK**

Name	Points Won	Points Lost	%Won	Pins	Gms	Avg	High Game	High Sers	-1-	-2-	-3-	Total
Doug J. Hirsch	23.0	25.0	47.92 %	10506	48	218	258	724	258	221	245	724
Don Grant	26.5	42.5	38.41 %	13576	69	196	300	665	165	203	255	623
Bob J. Grant	25.5	46.5	35.42 %	15002	72	208	269	712	235	160	253	648

**3 - SULLY'S PRO SHOP**

Name	Points Won	Points Lost	%Won	Pins	Gms	Avg	High Game	High Sers	-1-	-2-	-3-	Total
Andrew Willems	25.0	26.0	49.02 %	10910	51	213	279	779	279	243	257	779
Dakota King	23.5	39.5	37.30 %	12842	63	203	266	723	207	204	246	657
Noah Paar	19.5	31.5	38.24 %	10803	51	211	280	780	204	180	236	620
William Clark	23.0	25.0	47.92 %	10375	48	216	269	735				0

**4 - LUX CLUB**

Name	Points Won	Points Lost	%Won	Pins	Gms	Avg	High Game	High Sers	-1-	-2-	-3-	Total
Cindy Cottrell	39.0	30.0	56.52 %	15117	69	219	278	734	182	248	241	671
Steve Breitbach	34.0	17.0	66.67 %	11648	51	228	280	767	280	249	238	767
Terry P. Cottrell	45.0	24.0	65.22 %	15906	69	230	300	770	259	268	206	733
Molly M. Vogt	8.0	16.0	33.33 %	4446	24	185	233	605				0

**5 - FAMILY BEER**

Name	Points Won	Points Lost	%Won	Pins	Gms	Avg	High Game	High Sers	-1-	-2-	-3-	Total
Bill J. Klein	10.5	10.5	50.00 %	4642	21	221	289	790	212	226	224	662
Zachary P. Althaus	28.0	41.0	40.58 %	14588	69	211	300	799	300	244	255	799
Kody Klein	37.0	23.0	61.67 %	13844	60	230	300	846	233	245	278	756
Andy J. Ehrlich	37.5	31.5	54.35 %	16065	69	232	300	814				0

**6 - LIFELINE**

Name	Points Won	Points Lost	%Won	Pins	Gms	Avg	High Game	High Sers	-1-	-2-	-3-	Total
Shawn Timmerman	44.0	28.0	61.11 %	17037	72	236	300	819	212	233	258	703
Elisa Schmidt	25.0	26.0	49.02 %	10725	51	210	267	749	i193	i193	i193	579
Andrew T. Gantenbein	37.5	31.5	54.35 %	15723	69	227	300	758	186	233	212	631

**7 - MAX SMITH CONCRETE CONST**

Name	Points Won	Points Lost	%Won	Pins	Gms	Avg	High Game	High Sers	-1-	-2-	-3-	Total
Brooke J. Green	15.0	27.0	35.71 %	8737	42	208	267	746	179	148	193	520
Dan Kennedy	17.0	16.0	51.52 %	6808	33	206	247	699	237	191	237	665
Logan M. Klinge	14.0	19.0	42.42 %	7086	33	214	290	765	245	213	261	719
Jason D. Lanser	16.0	8.0	66.67 %	5542	24	230	279	804				0
Brody L. Green	12.0	6.0	66.67 %	4305	18	239	279	742				0
Bruce D. Pregler	11.0	16.0	40.74 %	5860	27	217	288	754				0
Dennis M. Pergande	16.5	7.5	68.75 %	5717	24	238	300	824				0

**8 - ROUND TWO**

Name	Points Won	Points Lost	%Won	Pins	Gms	Avg	High Game	High Sers	-1-	-2-	-3-	Total
Stephanie Willenbring	20.5	21.5	48.81 %	9175	42	218	290	736	229	188	226	643
Anne M. Powell	32.0	37.0	46.38 %	14442	69	209	299	758	247	212	299	758
John H. Powell	20.5	39.5	34.17 %	12452	60	207	288	788	173	191	172	536
Bob Powell	9.0	27.0	25.00 %	6925	36	192	242	659				0

9 - SUNSET LANES

Name	Points Won	Points Lost	%Won	Pins	Gms	Avg	High Game	High Sers	-1-	-2-	-3-	Total
Bob J. Hochrein	31.5	16.5	65.63 %	11419	48	237	299	809	247	243	184	674
Matt E. Gantenbein	14.0	19.0	42.42 %	7217	33	218	279	717	221	223	226	670
Jonathan J. Schroeder	28.0	23.0	54.90 %	11536	51	226	300	823	265	184	300	749

10 - FOODIE GARAGE

Name	Points Won	Points Lost	%Won	Pins	Gms	Avg	High Game	High Sers	-1-	-2-	-3-	Total
Phill J. Breitbach	16.0	23.0	41.03 %	8472	39	217	279	741	181	198	258	637
Stephanie A. Beck	39.0	30.0	56.52 %	14787	69	214	259	707	256	196	187	639
Steve G. Beck	34.5	31.5	52.27 %	14543	66	220	278	785	247	233	224	704
Austin Massey	23.5	18.5	55.95 %	9954	42	237	300	816				0

11 - EAGLE POINT SOFTWARE

Name	Points Won	Points Lost	%Won	Pins	Gms	Avg	High Game	High Sers	-1-	-2-	-3-	Total
John F. Biver	36.0	27.0	57.14 %	13822	63	219	300	785	225	219	160	604
Tom J. Schrobilgen	28.0	38.0	42.42 %	13400	66	203	279	713	192	214	207	613
Dan Moore	37.0	35.0	51.39 %	16030	72	222	300	768	300	182	246	728

12 - SUNSET BAR

Name	Points Won	Points Lost	%Won	Pins	Gms	Avg	High Game	High Sers	-1-	-2-	-3-	Total
Chuck P. Hoppman	18.0	36.0	33.33 %	10460	54	193	246	659	138	190	176	504
Ken M. Fleege	16.5	7.5	68.75 %	5530	24	230	283	760	199	163	179	541
Ken Duffield	38.5	33.5	53.47 %	16052	72	222	300	761	235	234	199	668
Dave E. Ginter	30.0	30.0	50.00 %	13100	60	218	299	802				0

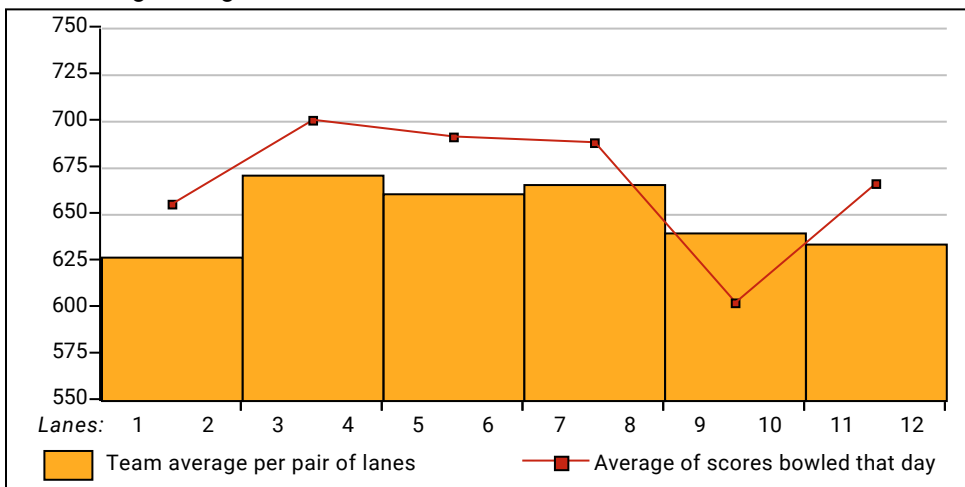
Temporary Substitutes

Name	Points Won	Points Lost	%Won	Pins	Gms	Avg	High Game	High Sers	-1-	-2-	-3-	Total
Luke P. Althaus	2.0	1.0	66.67 %	614	3	204	224	614				0
John B. Costello	6.0	6.0	50.00 %	2438	12	203	235	630				0
Kelsey M. Ehrlich	19.0	17.0	52.78 %	7595	36	210	278	735				0
Gary J. Hilby	7.0	8.0	46.67 %	3214	15	214	256	677				0
Rick U. Jacobs	1.0	2.0	33.33 %	642	3	214	247	642				0
Ryan L. Kase	12.5	11.5	52.08 %	5525	24	230	279	751				0
Bill J. Klein	10.5	10.5	50.00 %	4642	21	221	289	790	212	226	224	662
Tom Kramer	2.0	1.0	66.67 %	610	3	203	217	610				0
Kelby J. McEvoy-Madden	5.0	19.0	20.83 %	4162	24	173	245	557				0
Anthony F. Reuter	4.0	2.0	66.67 %	1516	6	252	300	825				0
Rick Roeder	5.5	9.5	36.67 %	3141	15	209	257	685				0
Rick Schatzabel	4.0	2.0	66.67 %	1372	6	228	278	704				0
Don E. Schroeder	3.0	6.0	33.33 %	1829	9	203	247	696				0
Riley Smith	3.0		100.00 %	731	3	243	255	731				0
Tiffany E. Thomas	2.0	1.0	66.67 %	578	3	192	215	578				0
Matt Tomkins	1.0	2.0	33.33 %	519	3	173	184	519				0
James Wagner	4.0	2.0	66.67 %	1317	6	219	248	677				0
Bryce J. Wiest		3.0	0.00 %	676	3	225	236	676				0
Xavier D. Wilson	3.0	6.0	33.33 %	1777	9	197	237	622				0

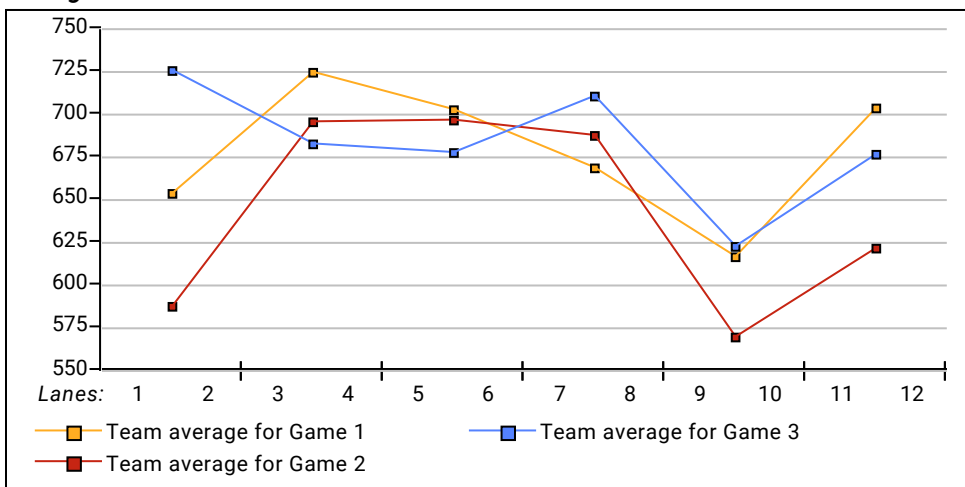
**This Week's Statistics**

	<u>Over All</u>	<u>Men</u>	<u>Women</u>
How many people bowled	35	30	5
Number of games bowled	105	90	15
Actual average of week's scores	223.40	224.73	215.40
How many games above average	67	59	8
How many games below average	38	31	7
Pins above/below average per game	6.51	7.27	2.00
How many people raised average	20	18	2
by this amount	1.17	1.18	1.09
How many people went down	15	12	3
by this amount	-1.12	-1.14	-1.01
League average before bowling	217.39	217.95	214.01
League average after bowling	217.58	218.20	213.83
Change in league average	0.19	0.25	-0.17
800s	--	--	--
775s	2	2	--
750s	3	2	1
725s	4	4	--
700s	5	5	--
675s	--	--	--
650s	8	7	1
625s	5	3	2
600s	4	4	--
575s	--	--	--
550s	--	--	--
525s	2	2	--
500s	2	1	1
475s	--	--	--
450s	--	--	--
425s	--	--	--
400s	--	--	--
below 400	--	--	--
300s	3	3	--
275s	4	3	1
250s	15	14	1
225s	34	29	5
200s	19	18	1
175s	21	15	6
150s	7	7	--
125s	2	1	1
100s	--	--	--
below 100	--	--	--

Team Average vs Avg of Scores



Average of Scores for Each Game



Amount Over/Under Team Average

